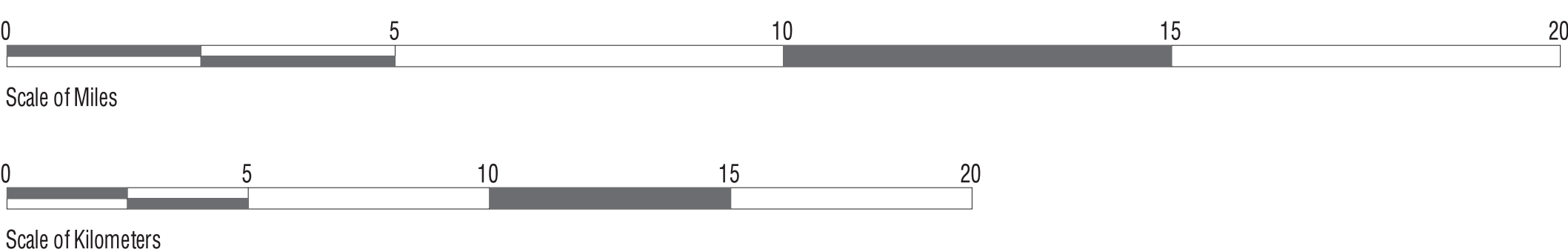
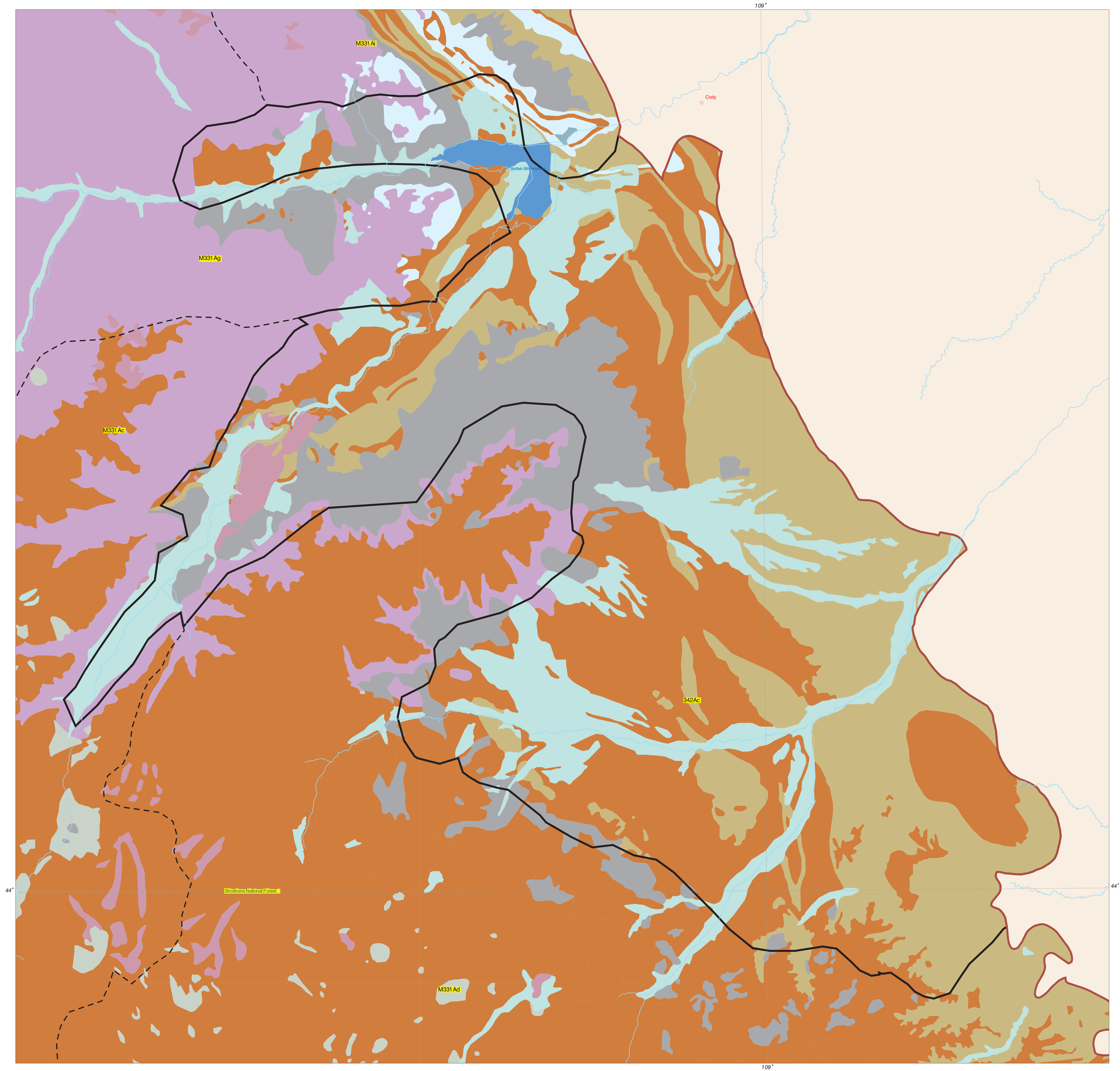


Legend

- Alluvium
- Wind Deposited Sediments
- Glacial Sediments
- Glacial Ice
- Landslide-Mass Wasted Units
- Loess
- Gneiss,Schists
- Carbonates
- Calc-Silicates
- Granitics
- Volcanics
- Metasediments
- Shale Associates
- Soft Sedimentary
- Quartzites
- Sandstone
- Water
- Study Area
- Subsections
- Sections
- State Border
- River or Stream



Albers Equal Area Projection Scale 1:116000

Lithology from USFS Regionl, Missoula MT.
Section and Subsections delineated by Region One USFS
according to National Ecological Mapping Hierarchy
General Technical Report INT-GTR-369
Other base data from various source; U.S. Census TIGER files,
ESRI ARCUSA 1:2M edrom.

